

INDUSTRIAL FLOORING



Food and Drink



Pharmaceutical



Automotive



Aerospace



Electronic



Manufacturing

A Guide to Industrial Resin Flooring

WELCOME TO FLOWCRETE - for the world at your feet

Looking for a floor that withstands heat, chemical spillage and physical impact? Looking for a floor that provides an impenetrable barrier against bacteria and contamination? Looking for a floor that can be installed to a tight deadline or even overnight?

With so many questions to be answered, specifying a new floor finish can sometimes seem like a daunting prospect. Achieving the correct balance between aesthetics, performance, cost and installation requirements is often hard to juggle - that's where we come in!

Flowcrete UK Ltd is a market-leading manufacturer of seamless resin flooring materials, all of which have been specially formulated to meet the demanding service conditions and performance criteria required by the industrial manufacturing sectors.

We have built up a reputation across the UK as **THE INDUSTRIAL FLOORING SPECIALIST**, with a passion for developing flooring solutions that help manufacturing environments to improve workflow productivity and efficiency while at the same time reducing industrial accidents and lost production.

GET MORE from floors...

Flowcrete UK supplies resin materials that offer durability, hygiene performance, safety and resilience for use in food factories, aircraft hangars, automotive plants, warehouses, factories and pharmaceutical facilities amongst others.

We manufacture multi-purpose epoxy resin floor finishes, fast-cure MMA floor coating systems that can be laid overnight and polyurethane resin that contains a powerful antimicrobial agent that destroys up to 99.9% of surface bacteria.

Plus, a whole range of our floor coating systems offer added anti-slip, antistatic and chemical resistance properties.

For more information visit www.flowcrete.co.uk/getmorefromfloors



Which Industrial Flooring System Meets My Requirements?

The following table offers recommendations, which are based on the product delivering an outstanding performance against the relevant service criteria, as well as its classification as set out by FeRFA, the Resin Flooring Association.



FeRFA Type 1 - Light Duty Floor & Wall Seal Coats

Product	Hygienic	Slip Resistant	Temp. Resistant	Chemically Resistant	Fast Cure	Antistatic	Durable
Flowseal EPW (0.12mm)		✓	✓			✓	
Peran WW (0.15mm)							✓

FeRFA Type 3 - Medium Duty, High Build Floor Coatings

Product	Hygienic	Slip Resistant	Temp. Resistant	Chemically Resistant	Fast Cure	Antistatic	Durable
Flowcoat SK (0.3mm)		✓	✓	✓			
Flowcoat SF41 (0.35mm)		✓	✓	✓			
Flowcoat TL (0.5mm)		✓	✓	✓			
Flowcoat LXP (1.5mm)		✓	✓	✓			

FeRFA Type 4 - Medium Duty, Multi-Layer Flooring

Product	Hygienic	Slip Resistant	Temp. Resistant	Chemically Resistant	Fast Cure	Antistatic	Durable
Flowfast Terrosso (4mm)		✓		✓	✓		

FeRFA Type 5 - Medium to Heavy Duty, Self-smoothing Floor Finishes

Product	Hygienic	Slip Resistant	Temp. Resistant	Chemically Resistant	Fast Cure	Antistatic	Durable
Flowshield LXP (1.5mm)		✓	✓	✓			
Flowshield SL (2mm)		✓		✓			
Flowfresh SL (2mm)	✓	✓		✓			✓
Flowshield LXP HD (2-3mm)		✓	✓	✓			✓

FeRFA Type 6 - Medium to Heavy Duty, Trowel-applied, Resin Flooring

Product	Hygienic	Slip Resistant	Temp. Resistant	Chemically Resistant	Fast Cure	Antistatic	Durable
Peran STB (2-5mm)		✓		✓		✓	✓
Flowfast Quartz (3-6mm)		✓	✓	✓	✓		✓
Flowtex (4-6mm)		✓	✓	✓			✓
Flowtex 41/42 (4 or 6mm)		✓	✓	✓			✓

FeRFA Type 7 - Heavy Duty Flowable Flooring

Product	Hygienic	Slip Resistant	Temp. Resistant	Chemically Resistant	Fast Cure	Antistatic	Durable
Flowfresh MF (4-6mm)	✓	✓	✓	✓		✓	✓

FeRFA Type 8 - Very Heavy Duty Resin Flooring

Product	Hygienic	Slip Resistant	Temp. Resistant	Chemically Resistant	Fast Cure	Antistatic	Durable
Flowcrete HF (6-9mm)		✓	✓	✓		✓	✓
Flowfresh HF (6-9mm)	✓	✓	✓	✓		✓	✓
Flowcrete RT (6-9mm)		✓	✓	✓			✓
Flowfresh RT (6-9mm)	✓	✓	✓	✓			✓
Mondéco Earth (7mm)		✓	✓	✓		✓	✓
Mondéco TZ (7mm)	✓	✓	✓	✓		✓	✓

PERFORMANCE key



Low slip potential in accordance with HSE and UKSRG guidelines.



Excellent resistance to acids, alkalis, fats, oils and other substances.



Electrostatic Dissipative (ESD) grades are available on request.



With correct maintenance offers 10 year life expectancy or greater.



Contains Polygiene®, a silver-ion based antimicrobial agent.



Demonstrates sustained tolerance of temperatures >60°C.

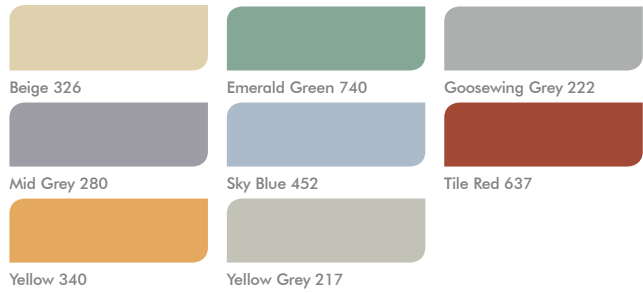


Recommended for fast-track installation in order to minimise downtime.

Light Duty Seal Coats & Medium Duty Floor & Wall Coatings

Flowseal EPW (0.12mm)

FeRFA Type 1



Flowseal EPW is a vapour-permeable epoxy floor seal coat system that can be applied in areas of light tolerance or to damp substrates to deliver a hygienic and coloured gloss finish on the surface of the floor.

Peran WW (0.15mm)

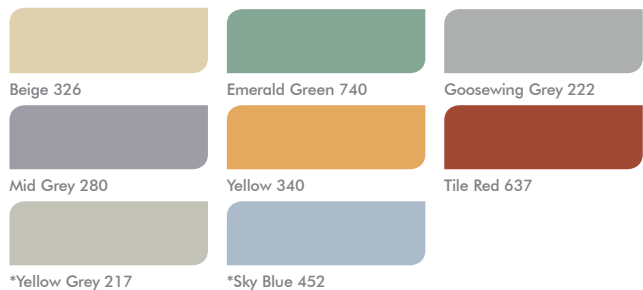
FeRFA Type 1



Peran WW is a low-odour, vapour permeable epoxy coating system best suited to vertical application on walls, or for use on ceilings where it creates a hygienic and protective seal coat. Glass fibre can be added for additional strength.

Flowcoat SK, SF41, TL & LXP (0.3-0.7mm)

FeRFA Type 3



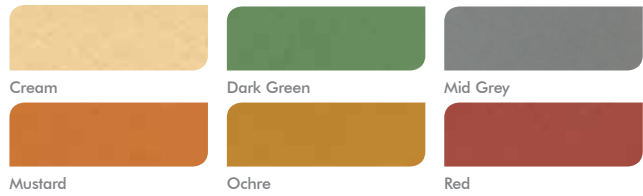
Flowcoat SK, SF41, TL & LXP are colourful resin floor coatings offering excellent wear, slip and chemical resistance. Demarcation and signage is available. Flowcoat SK provides a protective barrier against SKYDROL aviation fluid.

* Colours not available in Flowcoat LXP

Medium to Heavy Duty Resin Flooring

Flowfresh SL (2mm)

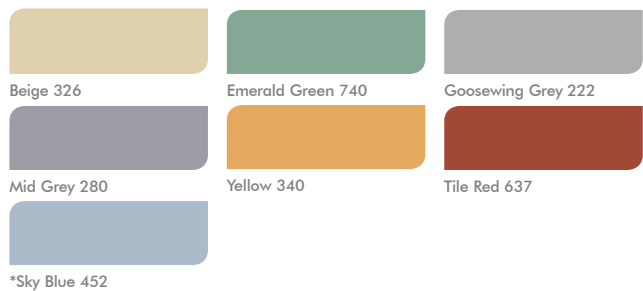
FeRFA Type 5



Flowfresh SL is a medium duty, polyurethane resin floor finish ideally suited for application in dry food processing and packaging areas. Flowfresh SL includes Polygiene®, a silver-ion based antimicrobial agent.

Flowshield SL, LXP & LXP HD (1.5-3mm)

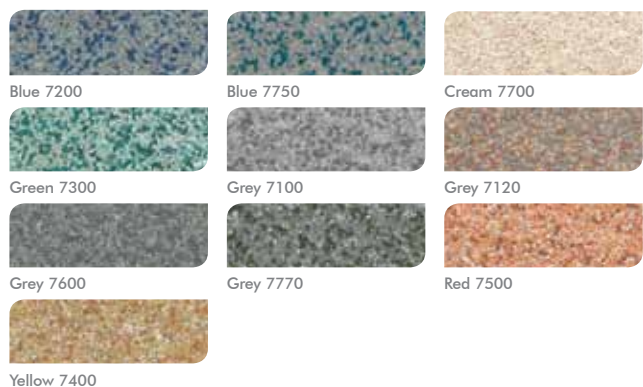
FeRFA Type 5



Flowshield SL, LXP & LXP HD are non-tainting, non-dusting and self-smoothing flooring systems suited to use in dry processing environments. All systems provide a flexible, easy to clean and chemical resistant floor topping.

Peran STB (2-4 or 3-5mm)

FeRFA Type 6



Peran STB is a high-strength epoxy floor coating that contains a colourful mix of quartz bead aggregates. The system performs in both dry and wet conditions owing to its durable, anti-slip and chemical resistant finish.

* Colour not available in Flowshield LXP or LXP HD

Medium to Heavy Duty Resin Flooring

Flowfast Quartz (3-6mm)

FeRFA Type 6



Blue 7750



Green 7300



Grey 7100



Grey 7120



Grey 7600



Grey 7770



Red 7500



Yellow 7400

Flowfast Quartz is a high-strength, fast-drying acrylic flooring system containing a mix of UV-stable and wear resistant coloured quartz aggregates. A FeRFA Type 4 flake alternative, Flowfast Terrosso, is also available.

Flowtex & Flowtex 41/42 (4-6mm)

FeRFA Type 6



FLOWTEX: Emerald Green 740



FLOWTEX: Tile Red 637



FLOWTEX: Yellow 340



FLOWTEX: Mid Grey 280



FLOWTEX 41/42: Emerald Green 740



FLOWTEX 41/42: Tile Red 637



FLOWTEX 41/42: Yellow 340



FLOWTEX 41/42: Mid Grey 280

Flowtex & Flowtex 41/42 are hardwearing, chemical resistant, power-trowelled epoxy floor coatings available with either a matt or gloss finish. All systems are low-odour and can be used in a variety of applications.

Flowfresh MF (4-6mm)

FeRFA Type 7



Cream



Dark Green



Mid Grey



Mustard



Ochre



Red

Flowfresh MF is a self-smoothing polyurethane resin system with excellent chemical, wear and temperature resistance. Flowfresh MF includes Polygiene®, a silver-ion based antimicrobial agent. ESD grades available.

Very Heavy Duty Resin Flooring

Flowfresh HF & RT, Flowcrete HF & RT (6-9mm)

FeRFA Type 8



Cream



Dark Grey



Gentian Blue



Green



Mid Grey



Mustard



Ochre



Red

Flowfresh HF & RT and Flowcrete HF & RT are heavy duty, polyurethane resin floor screeds containing white flint aggregates. Flowfresh HF & RT include Polygiene®, a silver-ion based antimicrobial agent. ESD grades available.

Mondéco Earth (7mm)

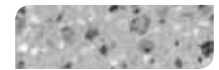
FeRFA Type 8



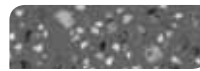
Agate Grey



Chilli Pepper



Coconut



Dusty Grey



Oyster White



Provence

Mondéco Earth is a hygienic, high strength, epoxy terrazzo with an excellent life expectancy. The system contains robust flint and granite aggregates and can include Polygiene®, a silver-ion based antimicrobial agent. ESD grades available.

Mondéco TZ (7mm)

FeRFA Type 8



Cream



Dark Green



Mid Grey



Mustard

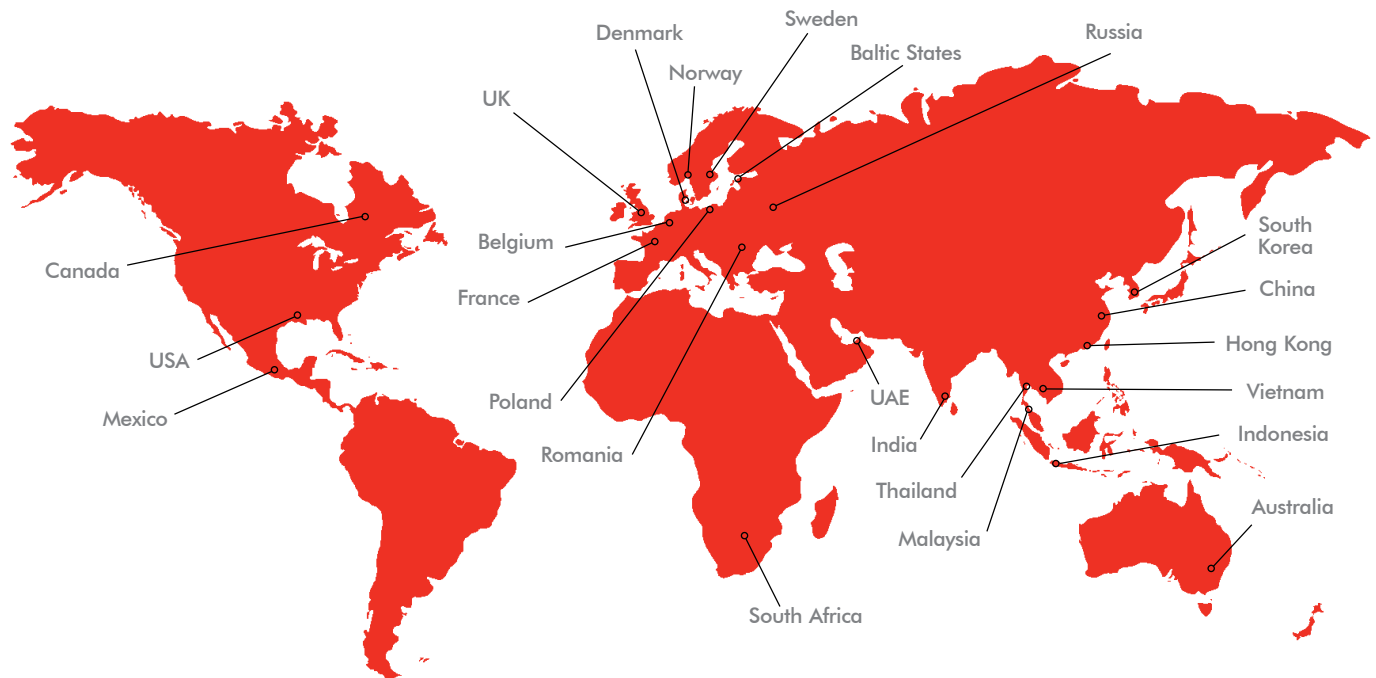


Ochre



Tile Red

Mondéco TZ is a hygienic, durable, polyurethane terrazzo with an excellent life expectancy. The system contains flint and granite aggregates as well as Polygiene®, a silver-ion based antimicrobial agent. ESD grades available.



Flowcrete around the world

Manufacturing Centres

UK	Flowcrete UK Ltd	Tel: +44 1270 753 000	Fax: +44 1270 753 333	Email: uk@flowcrete.com
Sweden	Flowcrete Sweden AB	Tel: +46 42 600 07 00	Fax: +46 42 15 50 90	Email: sweden@flowcrete.com
India	Flowcrete India Pvt Ltd	Tel: +91 44 4202 9831	Fax: +91 44 4202 9832	Email: india@flowcrete.com
Malaysia	Flowcrete Asia Sdn Bhd	Tel: +60 3 6277 9575	Fax: +60 3 6277 4645	Email: malaysia@flowcrete.com
South Africa	Flowcrete SA (Pty) Ltd	Tel: +27 31 461 3411	Fax: +27 31 461 3475	Email: southafrica@flowcrete.com
USA	Flowcrete North America Inc.	Tel: +1 936 539 6700	Fax: +1 936 539 6701	Email: usa@flowcrete.com
Belgium	Flowcrete Belgium	Tel: +32 157 569 27	Fax: +32 157 528 94	Email: belgium@flowcrete.com

Sales Centres

Australia	Flowcrete Australia Pty Ltd	Tel: +61 7 3205 7115	Fax: +61 7 3205 3116	Email: australia@flowcrete.com
Baltic States	Flowcrete Baltics	Tel: +37 1 2864 4666	Fax: +48 22 879 8918	Email: latvia@flowcrete.com
Canada*	Flowcrete Canada	Tel: +1 936 539 6700	Fax: +1 936 539 6701	Email: canada@flowcrete.com
China	Flowcrete China	Tel: +86 10 8472 1912	Fax: +86 10 8472 1942	Email: china@flowcrete.com
Denmark	Flowcrete Sweden AB	Tel: +45 3155 7882	Fax: +46 42 15 50 90	Email: denmark@flowcrete.com
France	Flowcrete France SAS	Tel: +33 344 588 976	Fax: +33 344 587 386	Email: france@flowcrete.com
Hong Kong	Flowcrete (Hong Kong) Ltd	Tel: +852 2795 0478	Fax: +852 2795 4842	Email: hongkong@flowcrete.com
Indonesia	Flowcrete Indonesia	Tel: +62 21 252 3201	Fax: +62 21 252 0720	Email: indonesia@flowcrete.com
Mexico*	Flowcrete Mexico	Tel: +1 936 539 6700	Fax: +1 936 539 6701	Email: mexico@flowcrete.com
Norway	Flowcrete Norway AS	Tel: +47 6486 0830	Fax: +47 6486 0831	Email: norway@flowcrete.com
Poland	Flowcrete Polska Sp. z.o.o.	Tel: +48 22 879 8907	Fax: +48 22 879 8918	Email: poland@flowcrete.com
Romania*	S.C. Flowcrete Romania s.r.	Tel: +40 374 00 80 78	Fax: +40 21 255 03 15	Email: romania@flowcrete.com
Russia*	Flowcrete RUS	Tel: +7 (495) 645 83 18	Fax: +7 (495) 645 83 18	Email: rus@flowcrete.com
South Korea*	Flowcrete Corporation	Tel: +82 2 2649 3874	Fax: +82 2 2649 3878	Email: southkorea@flowcrete.com
Thailand	Flowcrete Thailand	Tel: +66 2530 9611	Fax: +66 2530 9610	Email: thailand@flowcrete.com
UAE	Flowcrete Middle East FZCO	Tel: +97 14 886 4728	Fax: +97 14 886 4582	Email: uae@flowcrete.com
Vietnam	Flowcrete Vietnam	Tel: +84 8 38216561	Fax: +84 8 3821 6501	Email: vietnam@flowcrete.com

*Partner Company

Whilst every care has been taken to ensure that the information included in this document was accurate at the time of printing, Flowcrete reserve the right to change product specifications at any time without prior notice. The photographs and colours reproduced in this publication are within the constraints of the printing process and are not to be used for matching purposes. All photographs are used for approximate representation only and may not show the actual products on offer. E&OE.